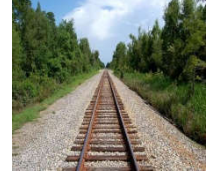




Blank label with a yellow background and a dashed line for writing.



Blank label with a yellow background and a dashed line for writing.



Blank label with a yellow background and a dashed line for writing.



Blank label with a yellow background and a dashed line for writing.



Blank label with a yellow background and a dashed line for writing.



Blank label with a yellow background and a dashed line for writing.



Blank label with a yellow background and a dashed line for writing.



Blank label with a yellow background and a dashed line for writing.



Blank label with a yellow background and a dashed line for writing.



Blank label with a yellow background and a dashed line for writing.



Blank label with a yellow background and a dashed line for writing.



Blank label with a yellow background and a dashed line for writing.

Cevaplar: er – ör – ray – kart – lira – kürek – mimar – marul – terli – yumurta – tiyatro – karyola